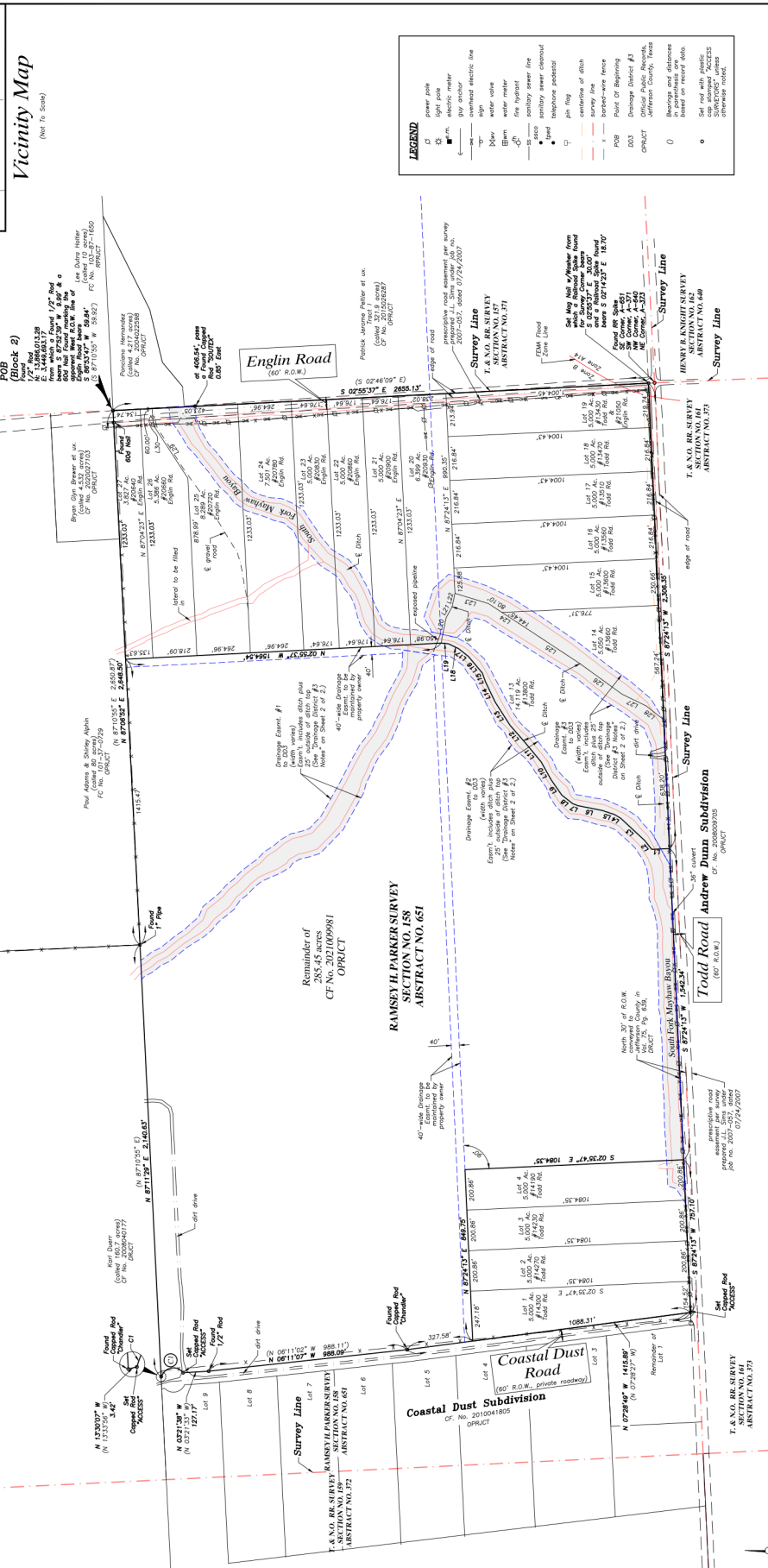


**PRELIMINARY PLAT**  
of  
**DUNN SUBDIVISION**  
110.568 Acres lying in the  
**RAMSEY H. PARKER SURVEY**  
Section No. 158, Abstract No. 651,  
Jefferson County, Texas



Line #	Direction	Length
L1	N 02° 35' 47.7" W	88.65'
L2	N 51° 36' 04" E	54.40'
L3	N 42° 51' 12" E	164.58'
L4	N 30° 36' 14" E	34.82'
L5	N 18° 11' 14" E	64.99'
L6	N 11° 29' E	122.05'
L7	N 21° 16' 35" E	28.30'
L8	N 37° 49' 52" E	68.16'
L9	N 55° 11' 57" E	91.07'
L10	N 60° 47' 27" E	102.70'
L11	N 50° 15' 14" E	130.12'
L12	N 48° 52' 59" E	106.93'
L13	N 57° 12' 37" E	138.13'
L14	N 64° 33' 04" E	110.82'
L15	N 70° 14' 36" E	47.28'
L16	N 49° 47' 52" E	106.23'
L17	N 38° 25' 08" E	61.83'
L18	N 25° 39' 39" E	56.41'
L19	N 05° 11' 59" E	36.24'
L20	S 76° 52' 08" E	127.94'
L21	S 81° 22' 10" E	62.69'
L22	S 77° 56' 57" E	67.86'
L23	S 16° 58' 46" W	173.10'
L24	S 33° 08' 04" W	224.55'
L25	S 33° 22' 57" W	317.24'
L26	S 35° 57' 47" W	268.41'
L27	S 25° 48' 44" W	132.28'
L28	S 57° 04' 10" W	316.15'
L29	N 87° 04' 23" E	79.99'

**Acreage Summary**  
Lots 1 - 4: 20.00 acres  
Lots 13-27: 90.568 acres

Red=40.00'  
Ac Length=32.74'  
Chord Bearing=N 107° 30' W  
Chord Length=107.38'  
(107.42')

Access  
Surveyors, LLC  
Commercial - Industrial - Residential  
10000 E. Highway 107, Suite 100  
Houston, Texas 77036  
Phone: (281) 438-6322 Fax: (281) 438-6122  
www.access-surveyors.com

**FOR REVIEW**

